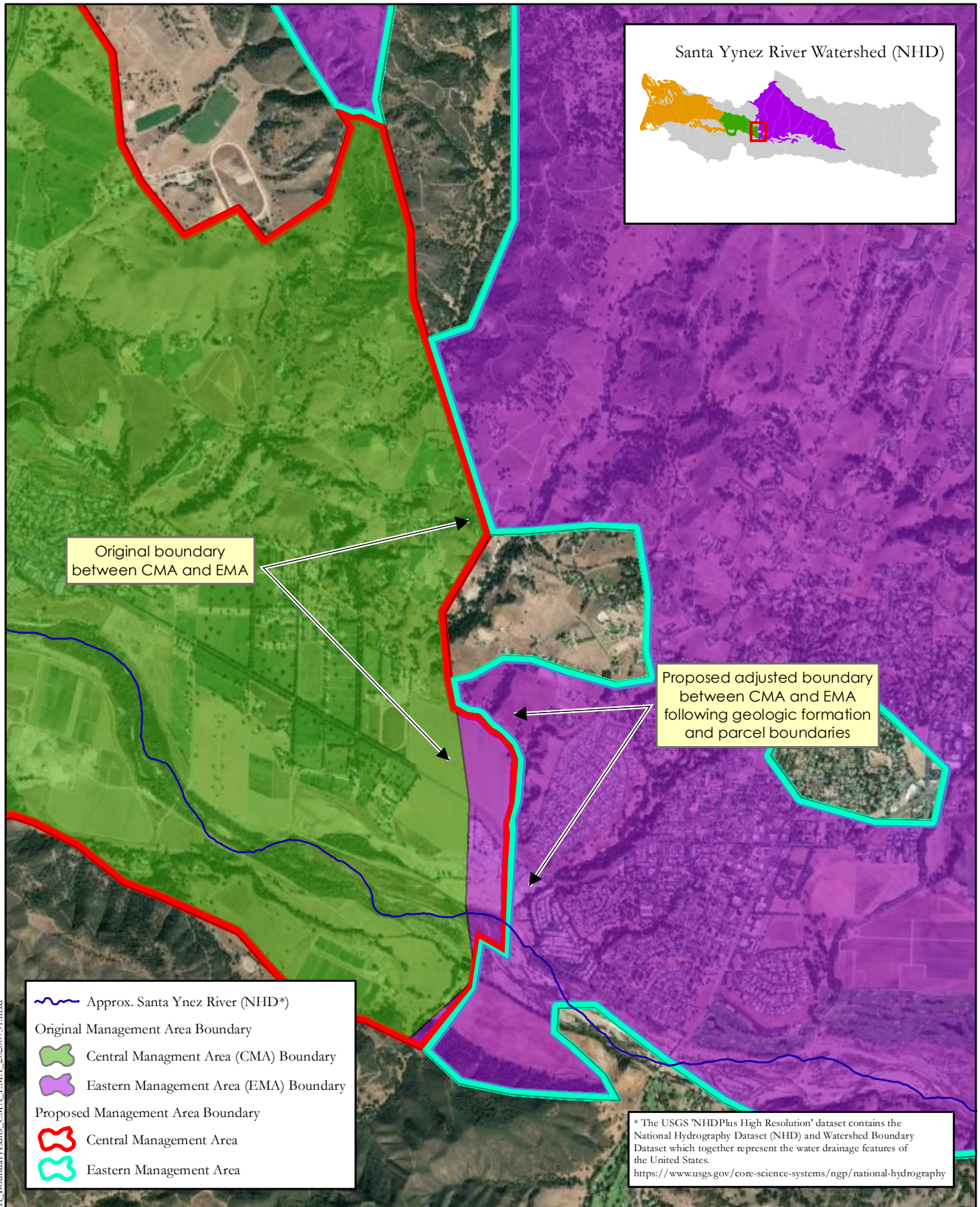


FIGURE 1



Document Path: \\jnc2710\Drafts\Boundary\Edits_CMA_EMA_20200731.mxd



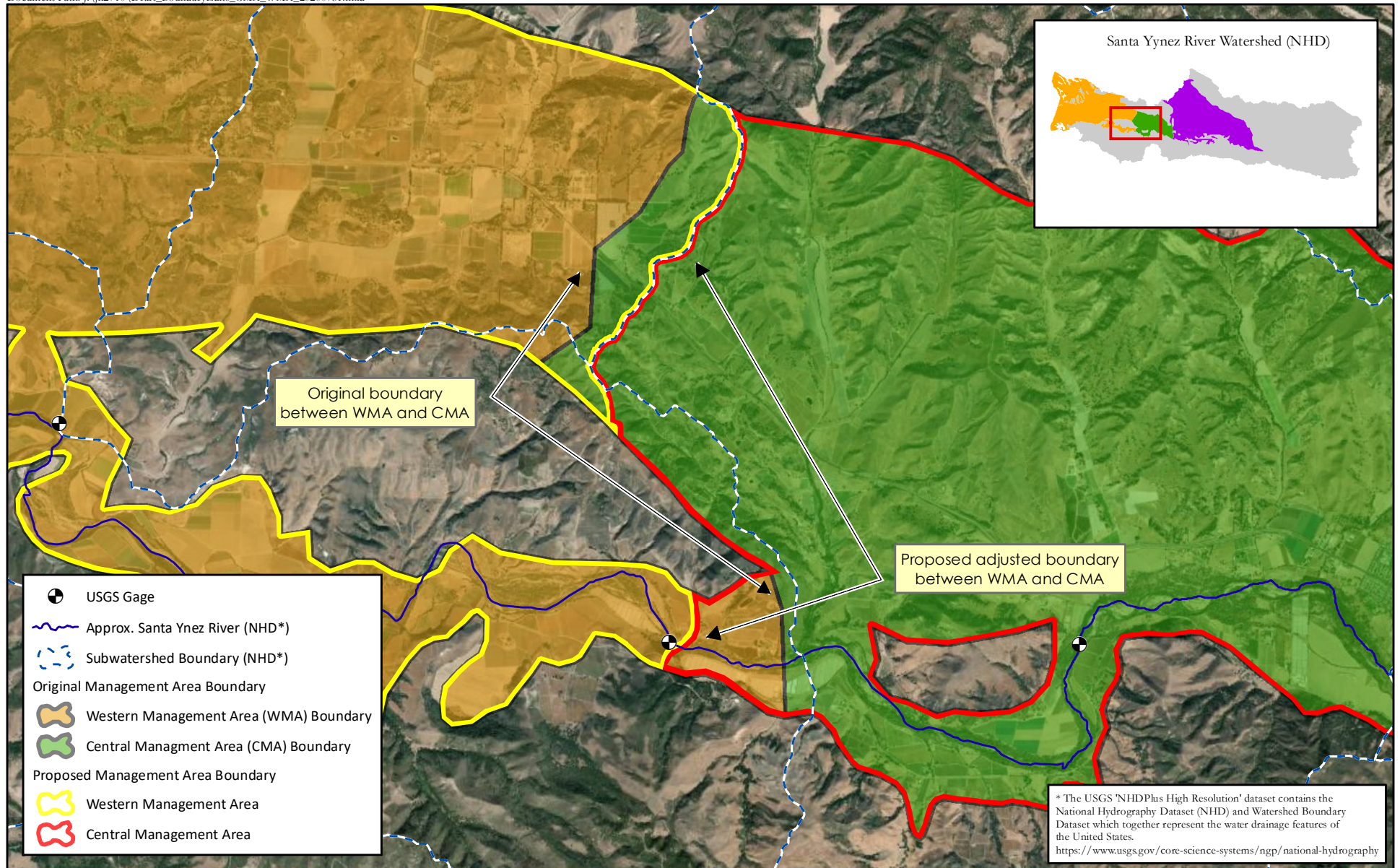
DRAFT
7/31/2020

PROPOSED BOUNDARY ADJUSTMENTS CENTRAL AND EASTERN MANAGEMENT AREAS

Proposed adjusted boundary between CMA and EMA
following geologic water-bearing formation boundary and parcels;
No exterior DWR Bulletin 118 boundaries are changed.



0 0.25 0.5
Miles



DRAFT
7/31/2020

PROPOSED BOUNDARY ADJUSTMENTS CENTRAL AND WESTERN MANAGEMENT AREAS

This map proposes that internal management area boundaries within the Santa Ynez River Groundwater Basin be redrawn to follow watershed boundaries more accurately and to utilize a historical USGS gage location; no exterior DWR Bulletin 118 boundaries are changed.

0 0.5 1
Miles

