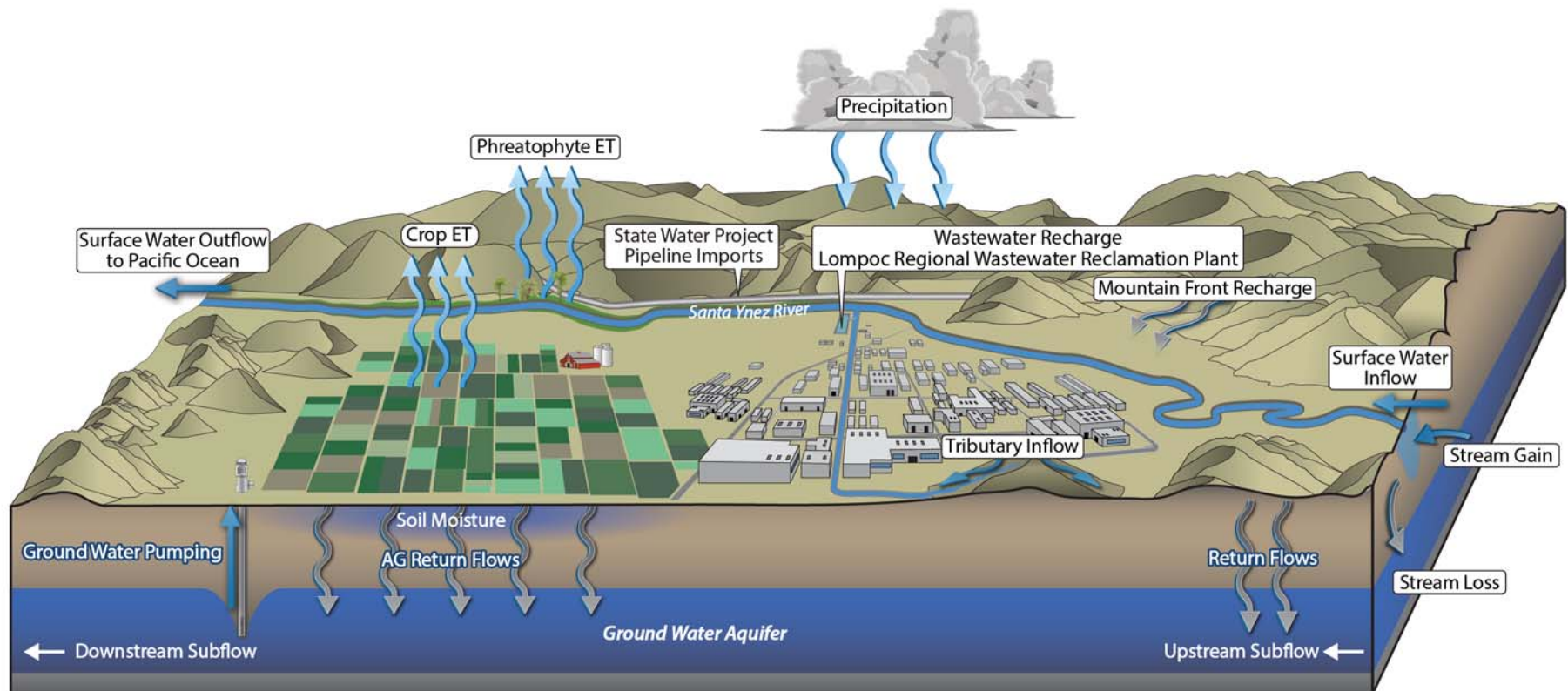
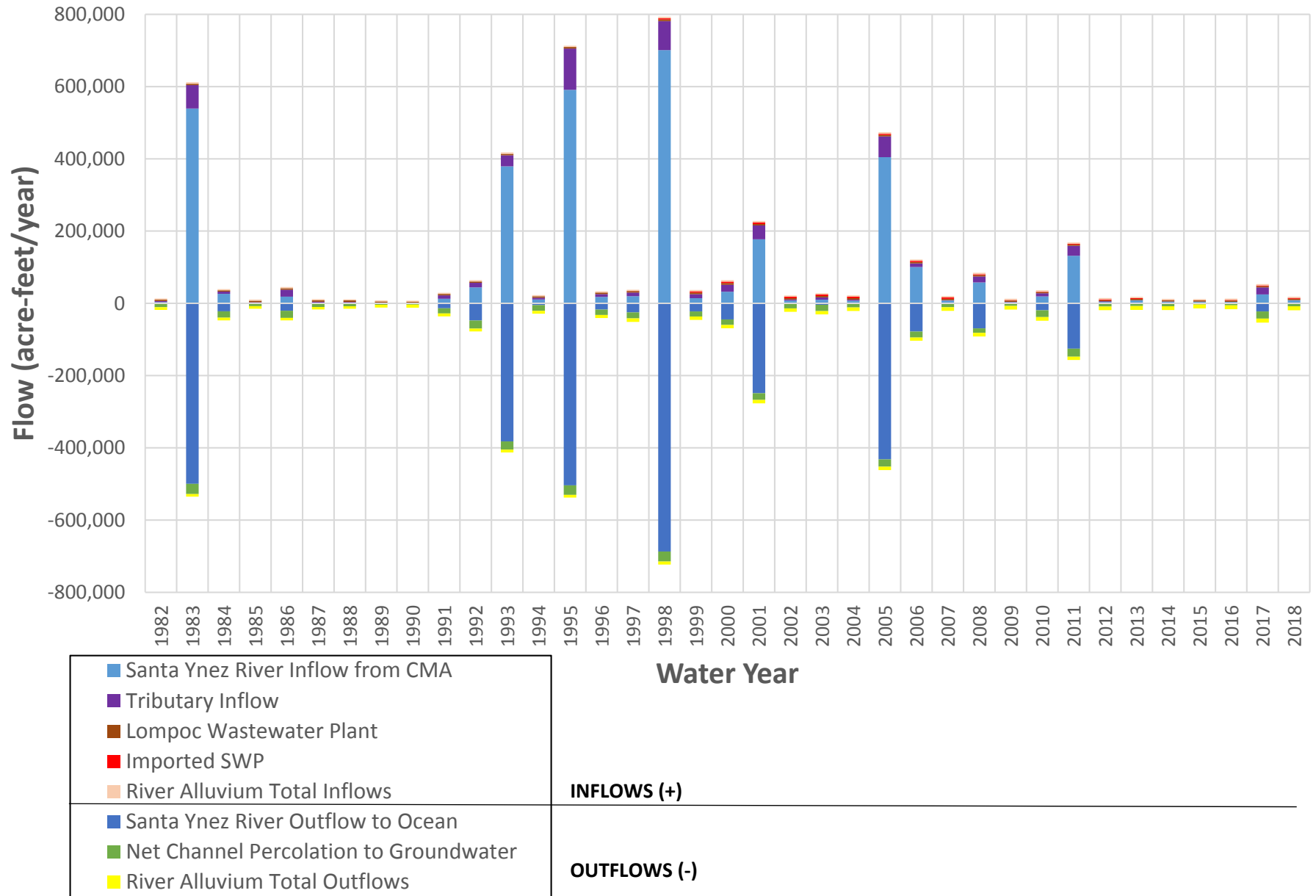


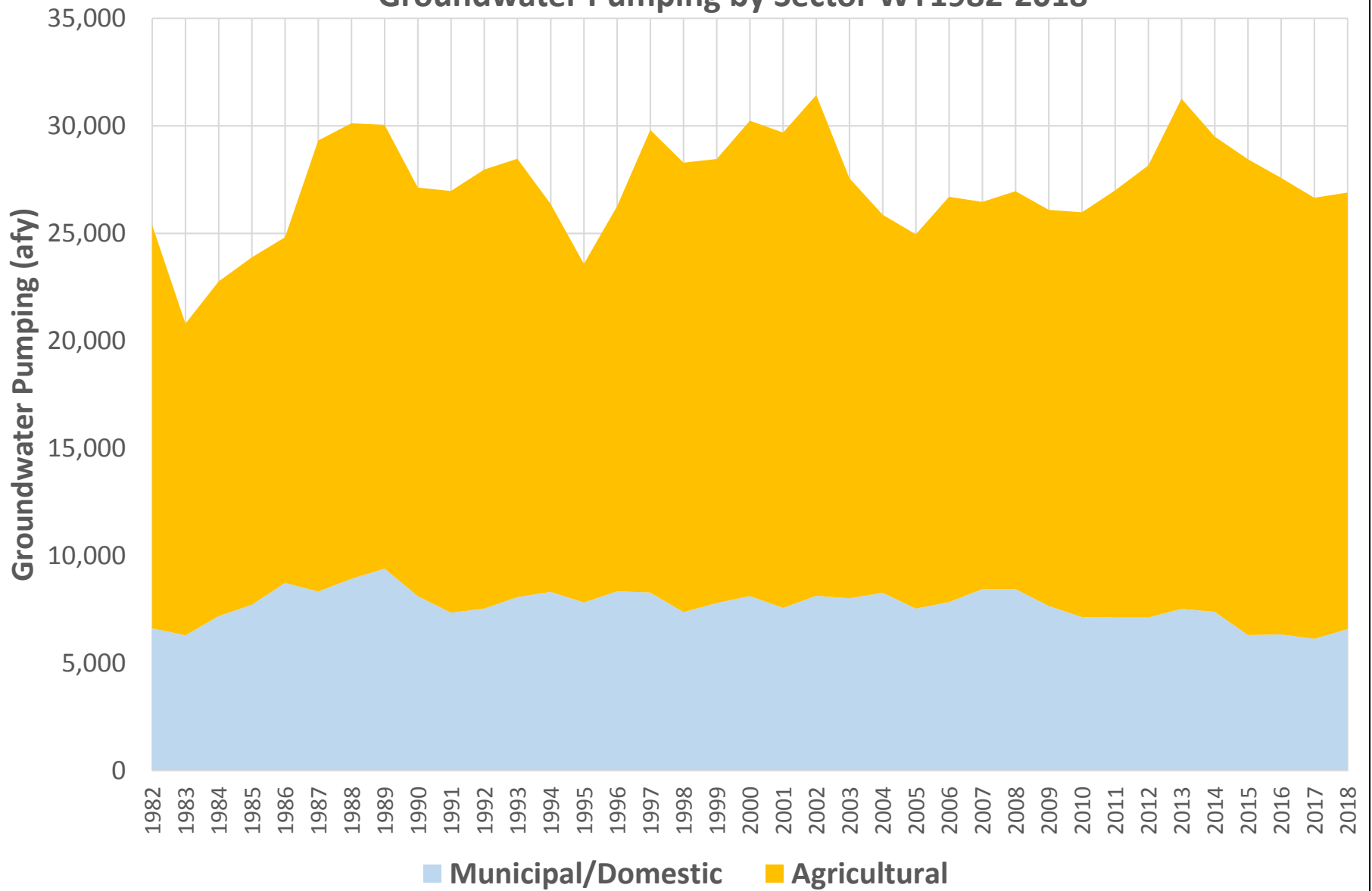
**DRAFT**  
**WESTERN MANAGEMENT AREA OF THE  
SANTA YNEZ RIVER VALLEY GROUNDWATER BASIN**



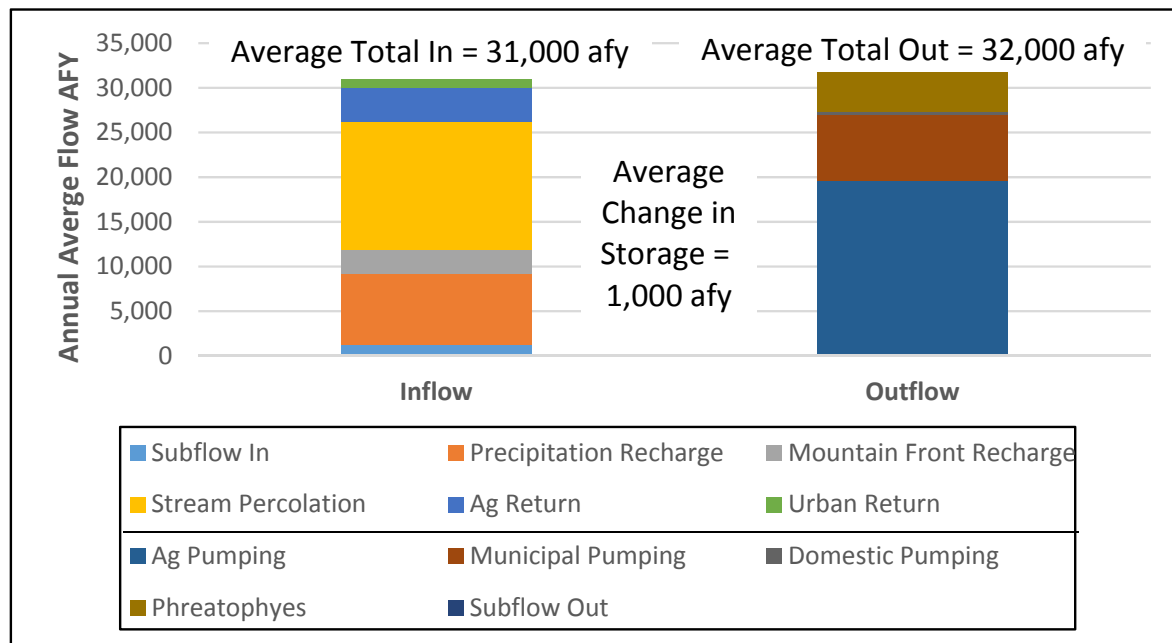
**Figure 2-1 Historical Surface Water Components, WMA**



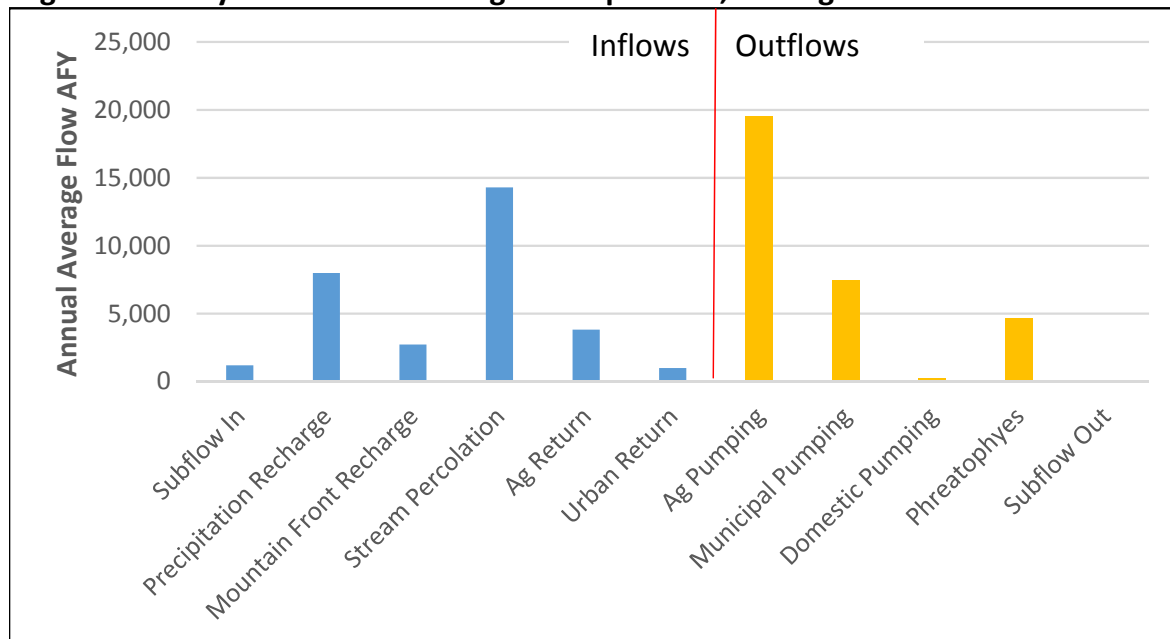
**Figure 2-2. Western Management Area  
Groundwater Pumping by Sector WY1982-2018**



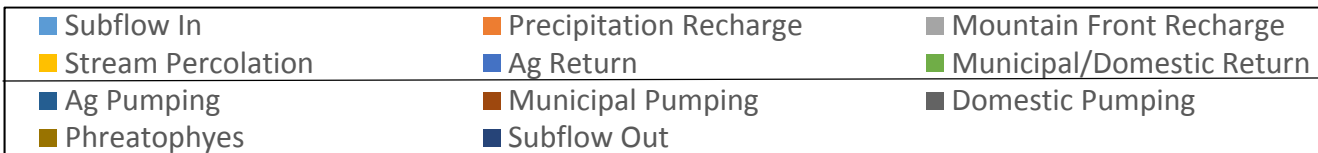
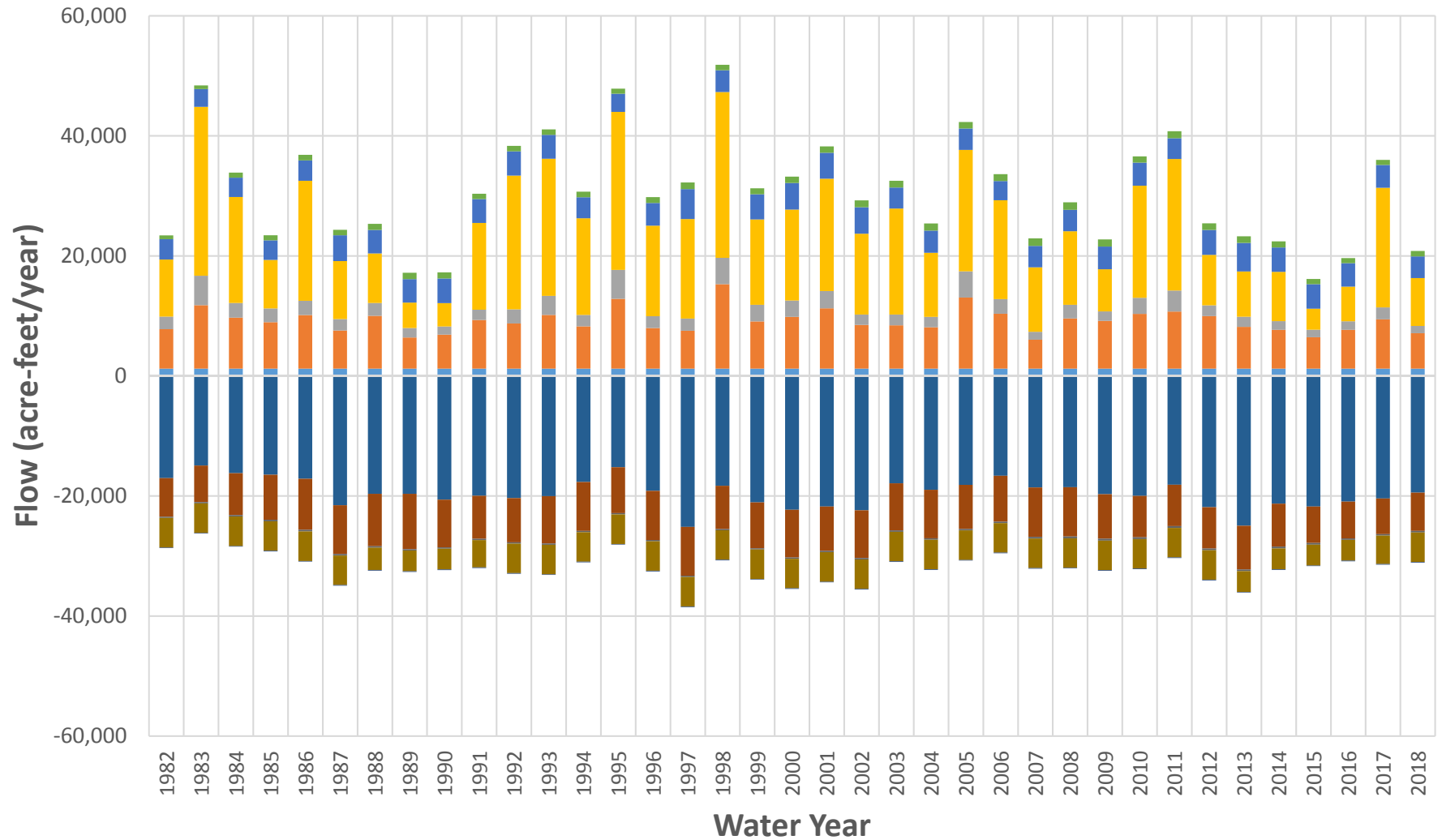
**Figure 2-3. Average Groundwater Budget Volumes, Historical Period 1982-2018**



**Figure 2-4. Key Groundwater Budget Components, Average 1982-2018**



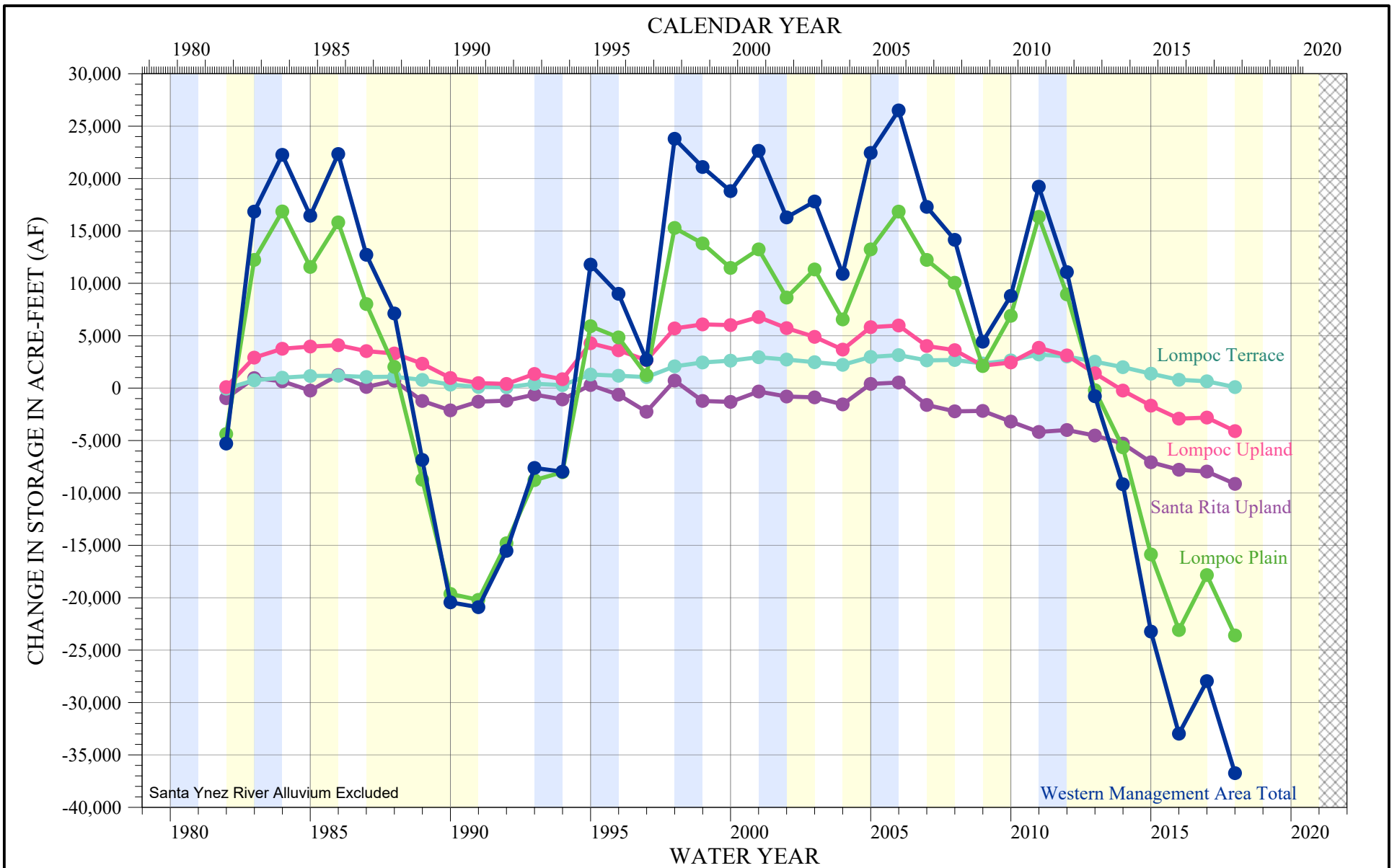
# Figure 2-5 Historical Groundwater Budget, WMA



**INFLOWS (+)**

**OUTFLOWS (-)**

I:\DATA\2710\Reports - Tech Memo\2021-01 Water Budget\2021-04 Storage\WMA 2-06\_Cumulative\_Dewatered\_Storage\_1982.grf 3/30/2021



**CUMULATIVE CHANGE IN  
GROUNDWATER STORAGE  
BY SUBAREA,  
RELATIVE TO MARCH 1982**

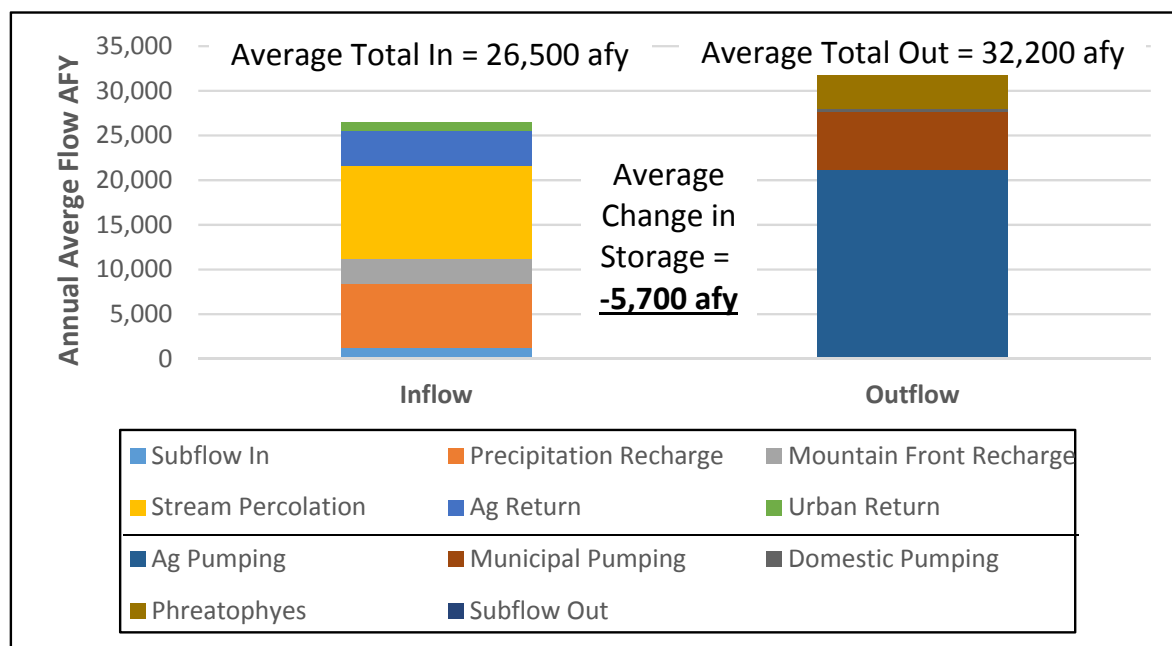
**DRAFT  
3/30/2021**

**Water Year Type (1942-2020)**

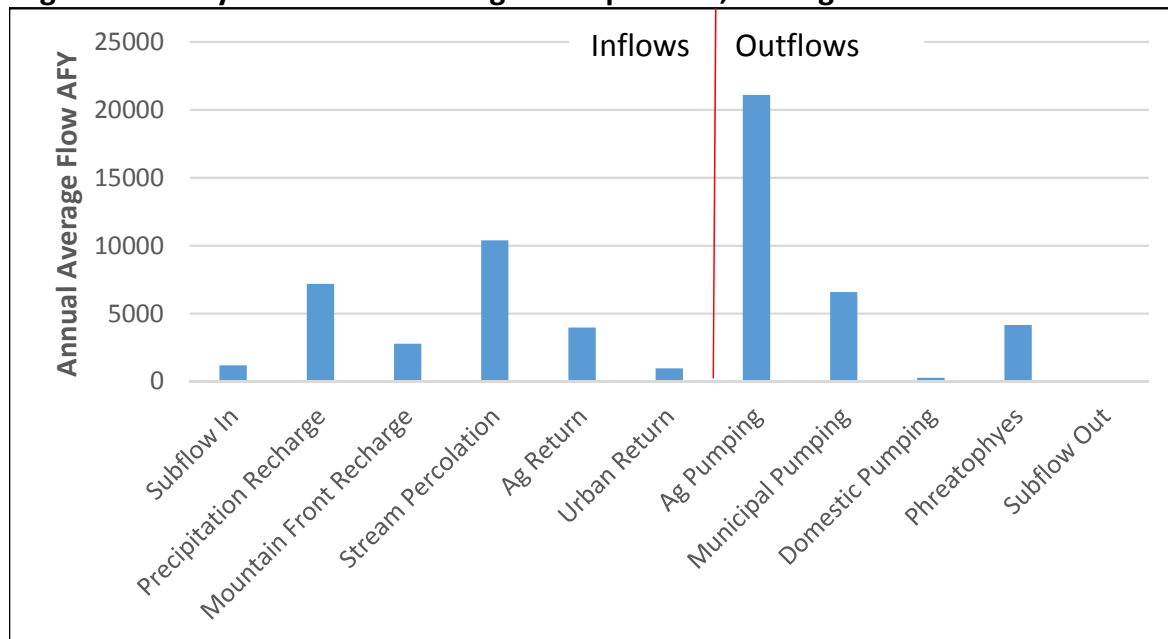
- Wet
- Above/Below Normal
- Dry / Critically Dry
- No Data

FIGURE 2-6

**Figure 3-1. Average Groundwater Budget Volumes, Current Period 2011-2018**

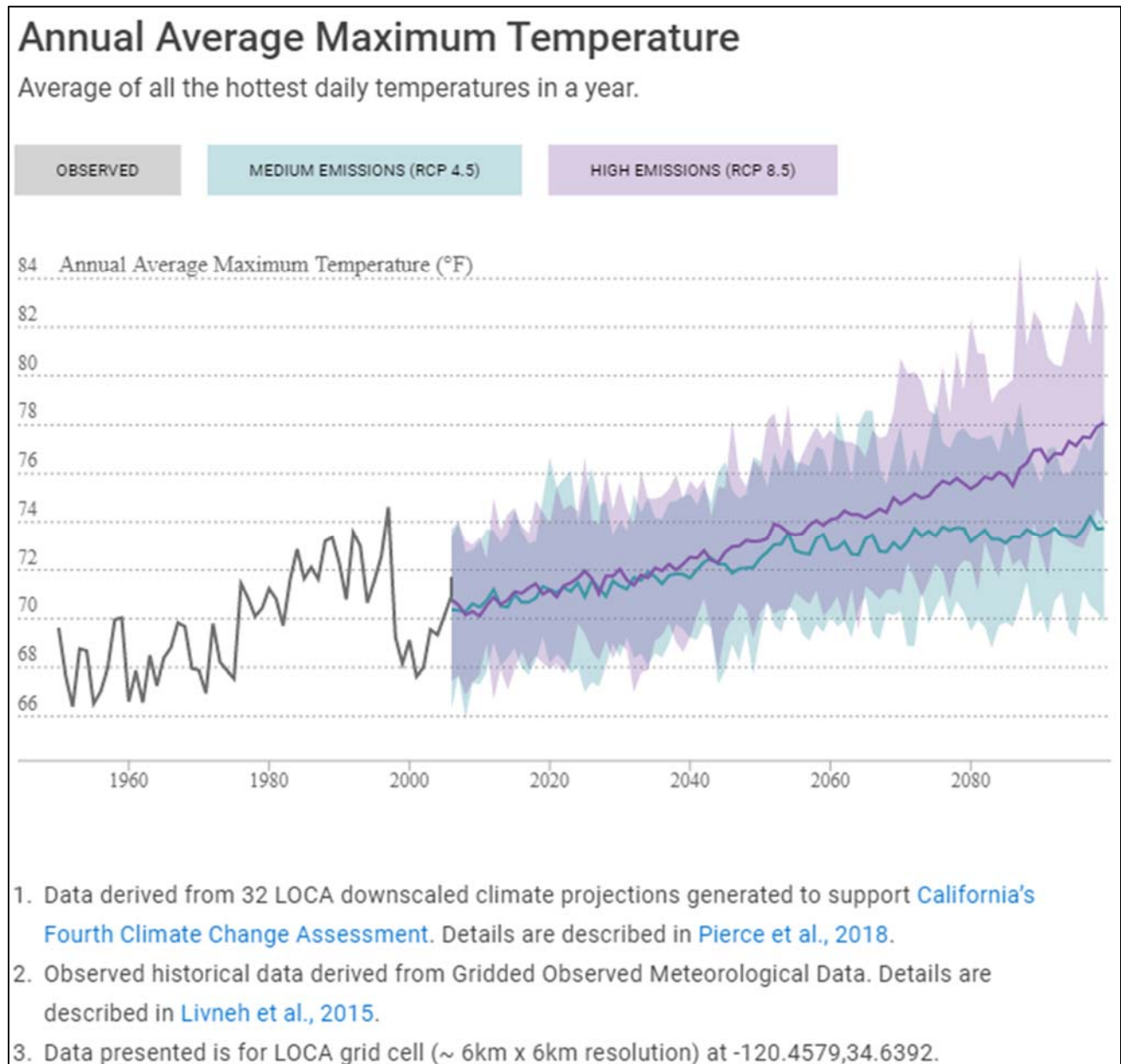


**Figure 3-2. Key Groundwater Budget Components, Average 2011-2018**

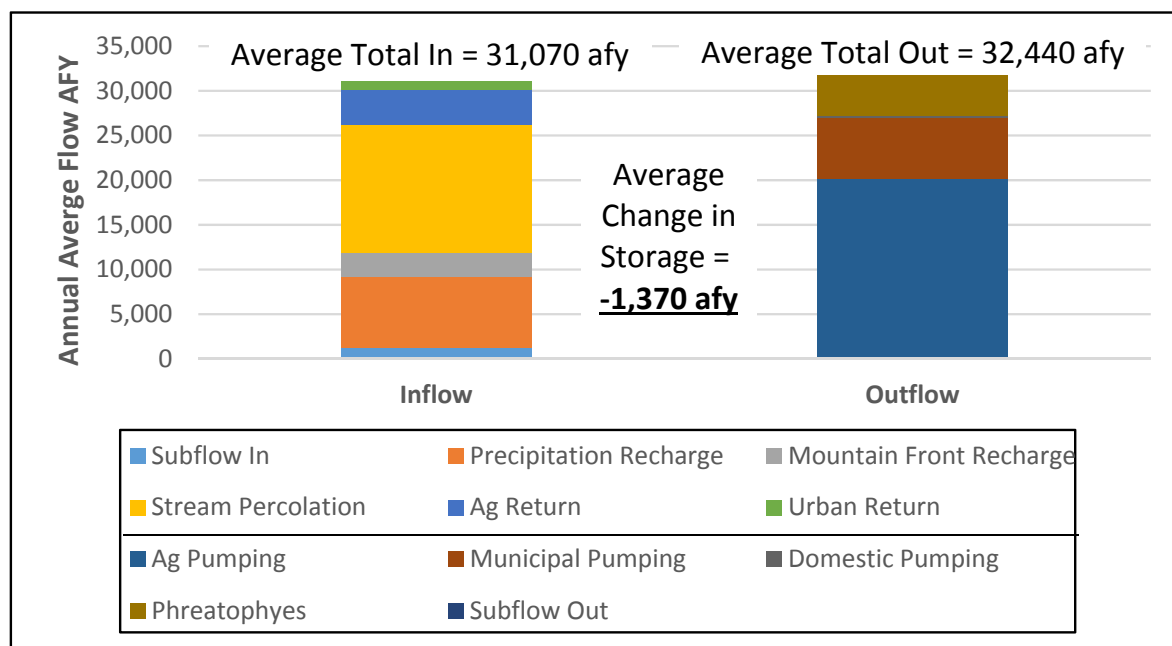


**FIGURE 4-1 ANNUAL AVERAGE DAILY MAXIMUM TEMPERATURE AT LOMPOC**

Source: <https://cal-adapt.org/tools/local-climate-change-snapshot/>



**Figure 4-2. Average Groundwater Budget Volumes, Future 2042**



**Figure 4-3. Average Groundwater Budget Volumes, Future 2072**

